

RAIN 2001-05-17

How to support a process with
Rose/Rose RT

by

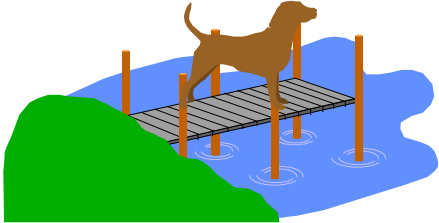
Thomas Nilsson
Örjan Altebro

Improflex AB



System Complexity

Jetty



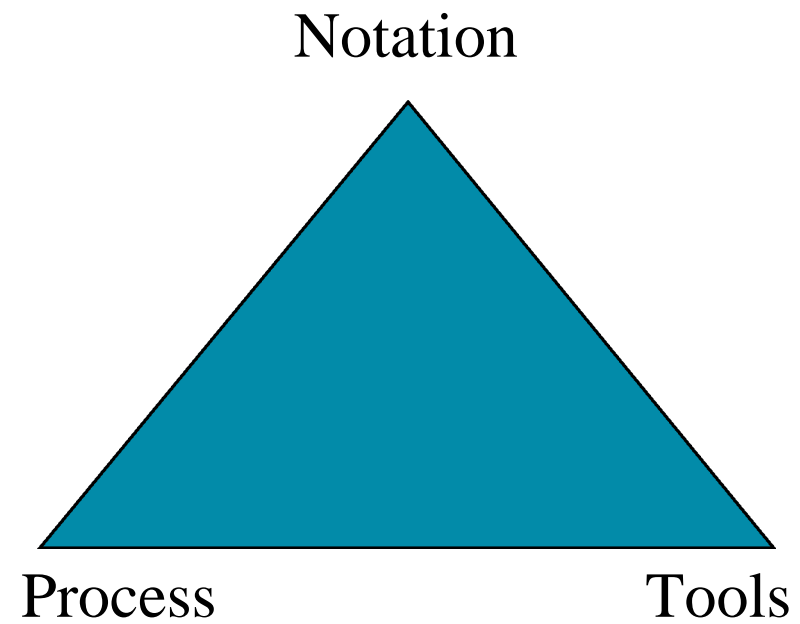
House



City

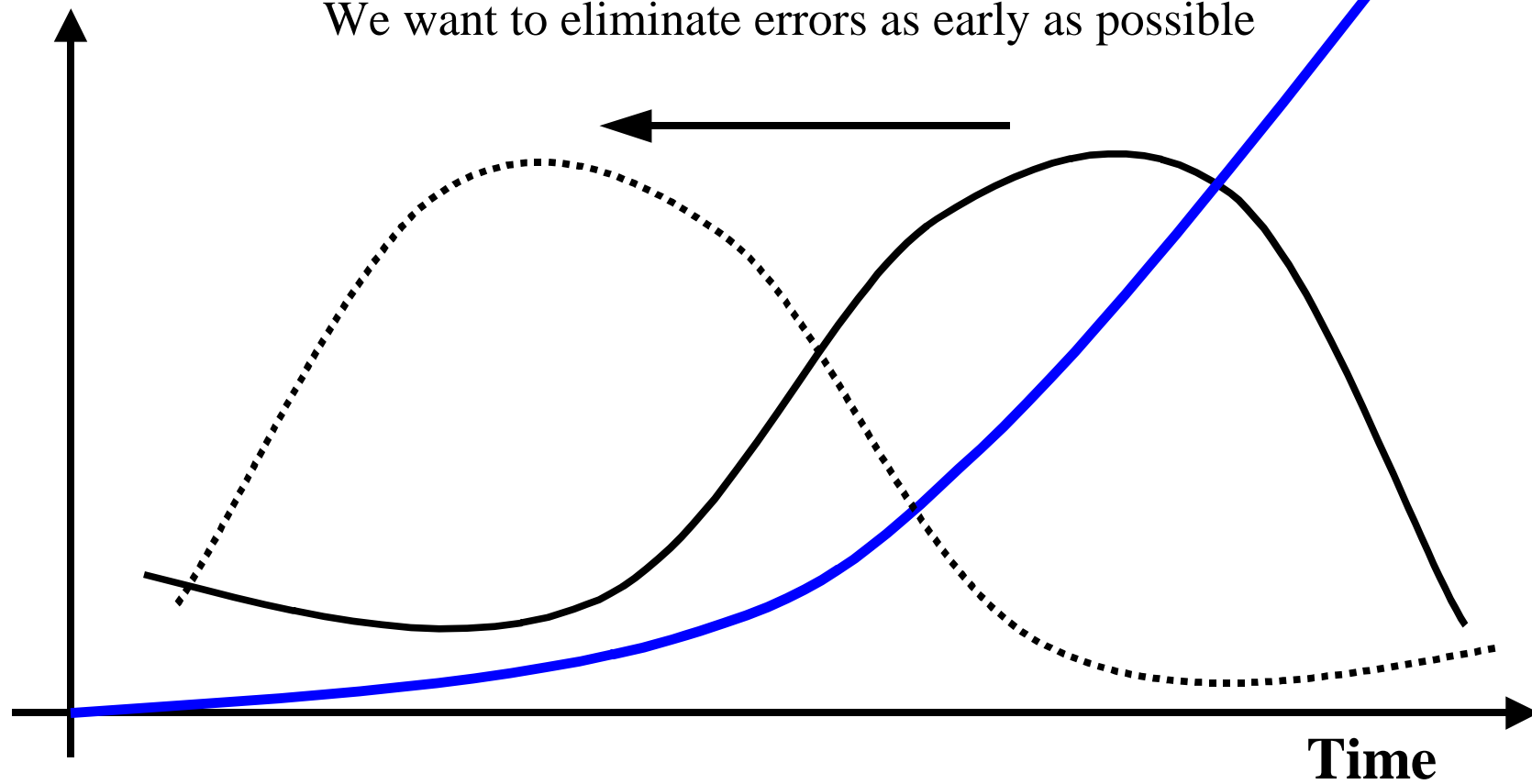


Triangle for Success



Errors/Cost

We want to eliminate errors as early as possible



If we can divide/delegate work => Improved efficiency (time/cost)

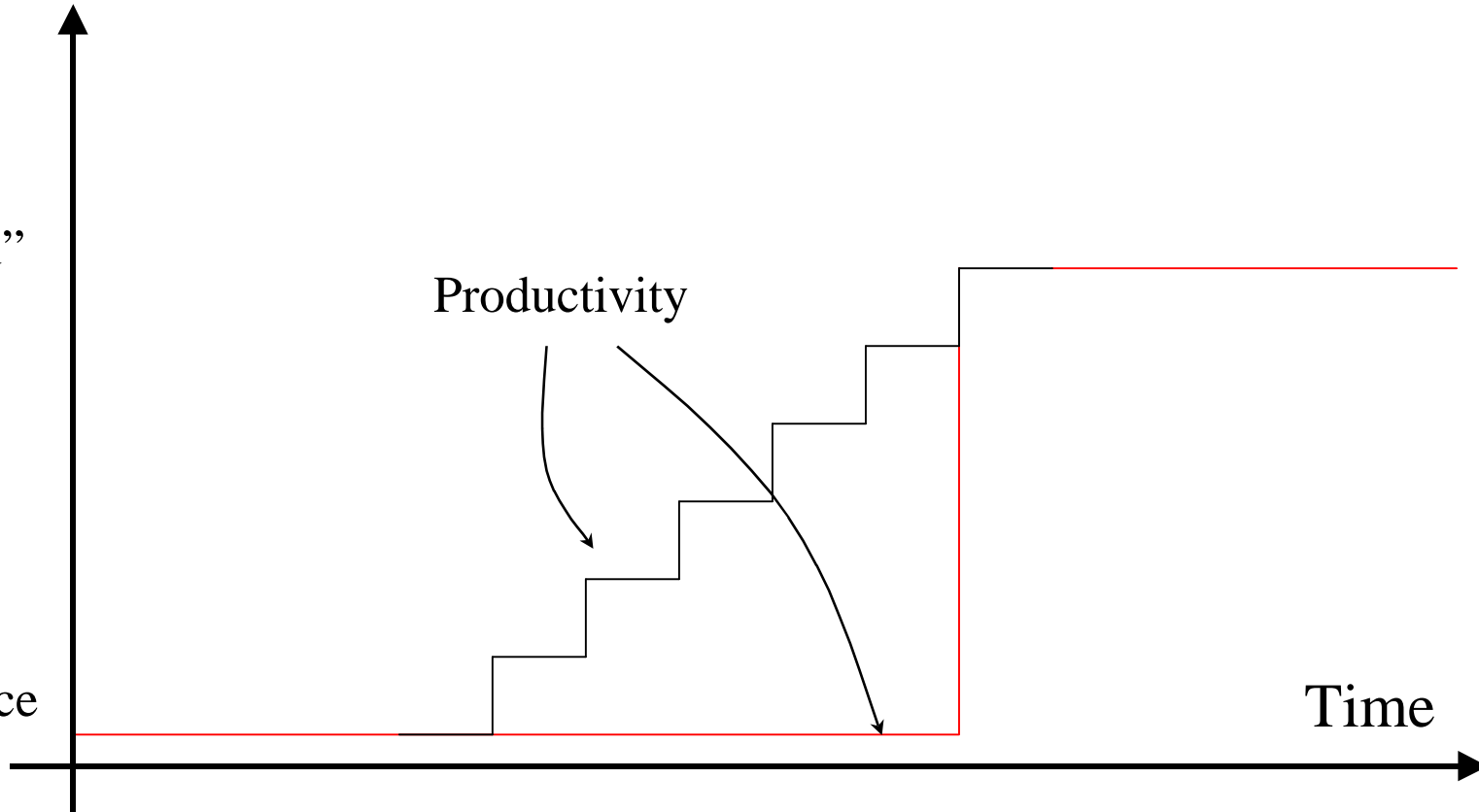
Knowledge/Experience

"Guru"

Productivity

Novice

Time



A model is an abstraction that depicts the essential parts in a complex structure or problem.

The nine types of diagrams in UML

- Use-Case Diagram
- Class Diagram
- Object Diagram
- State Diagram
- Sequence Diagram
- Collaboration Diagram
- Activity Diagram
- Component Diagram
- Deployment Diagram

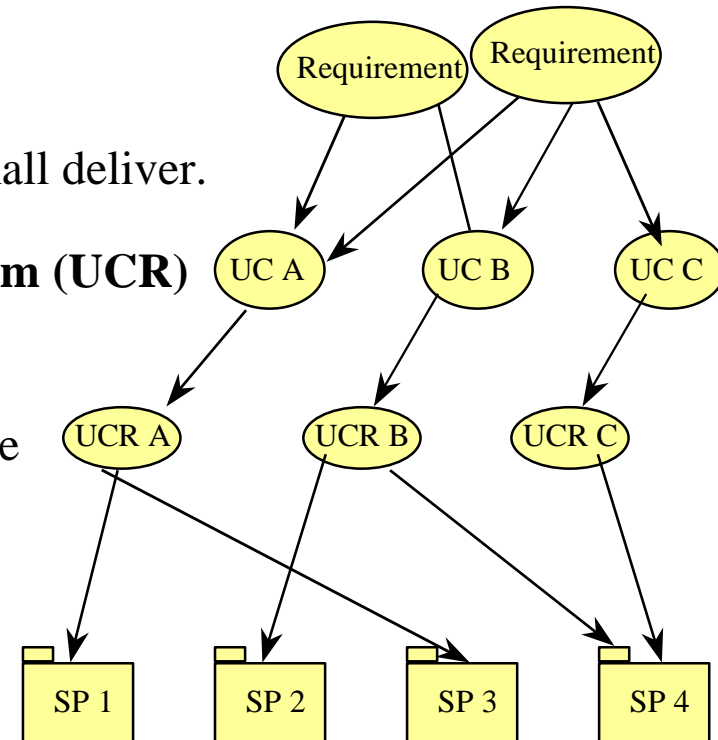
The process

The requirements are collected in Use Cases (UC)

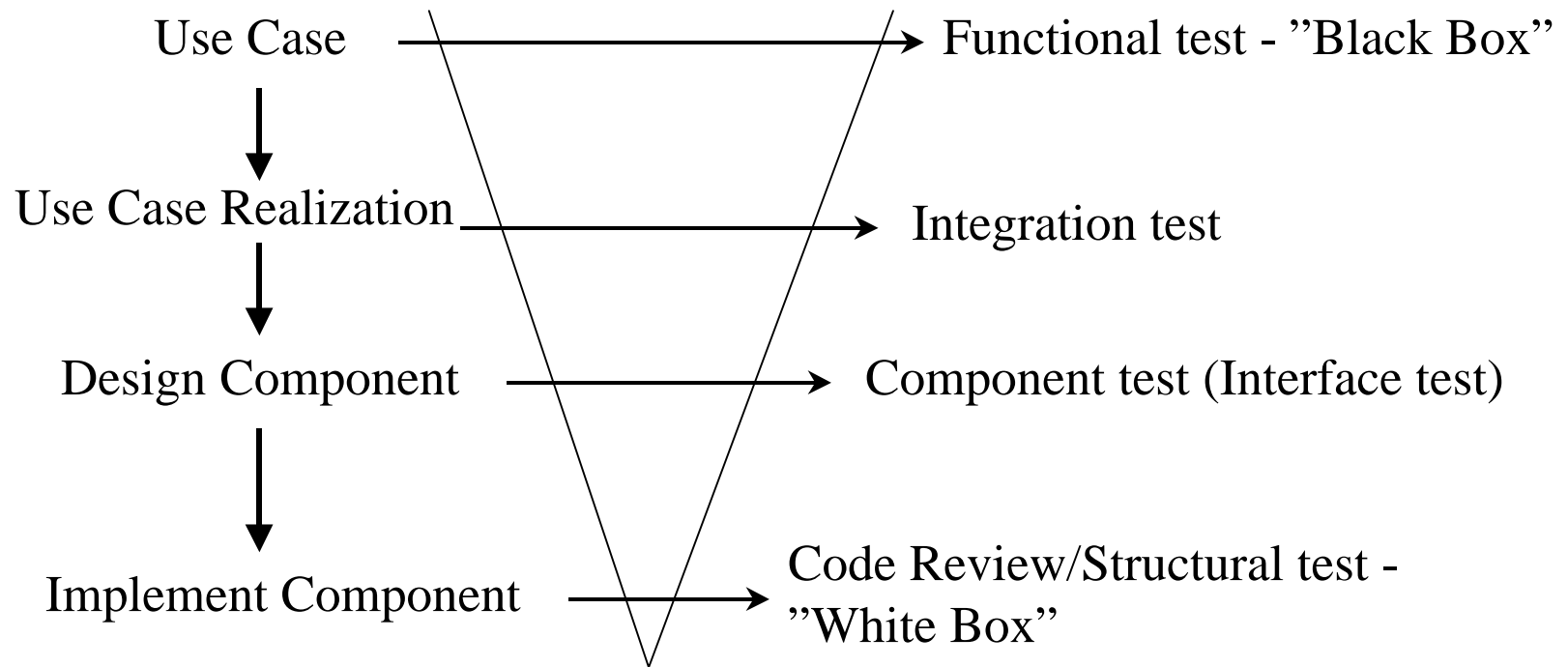
A UC describes a function or service that the system shall deliver.

Each UC is realized in a Use Case Realization diagram (UCR)

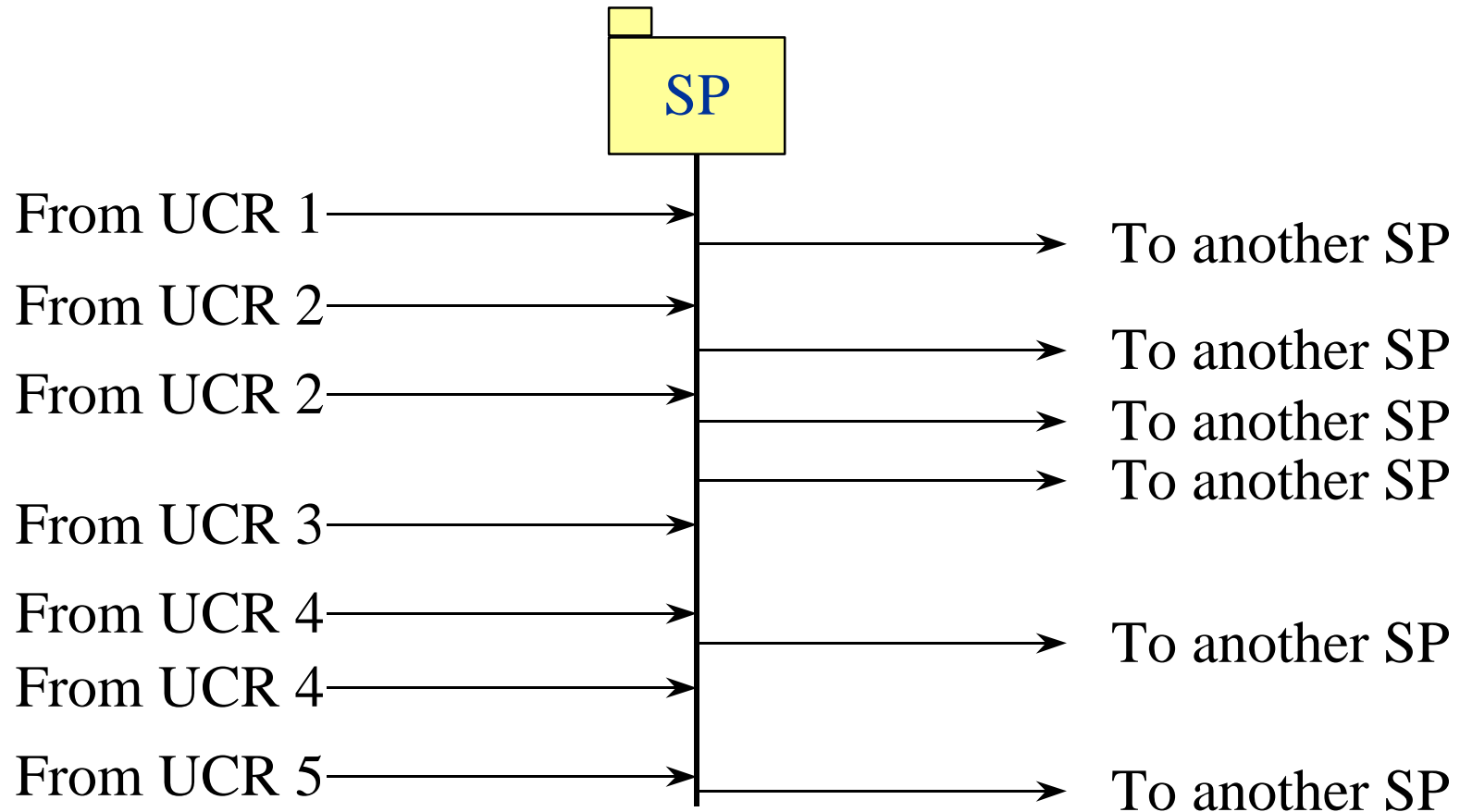
In the UCR the flow between the different components/
Sub-Packages (SP) is defined. In this way the SP is
assigned the responsibility to implement part or all of the
function described in the UC.

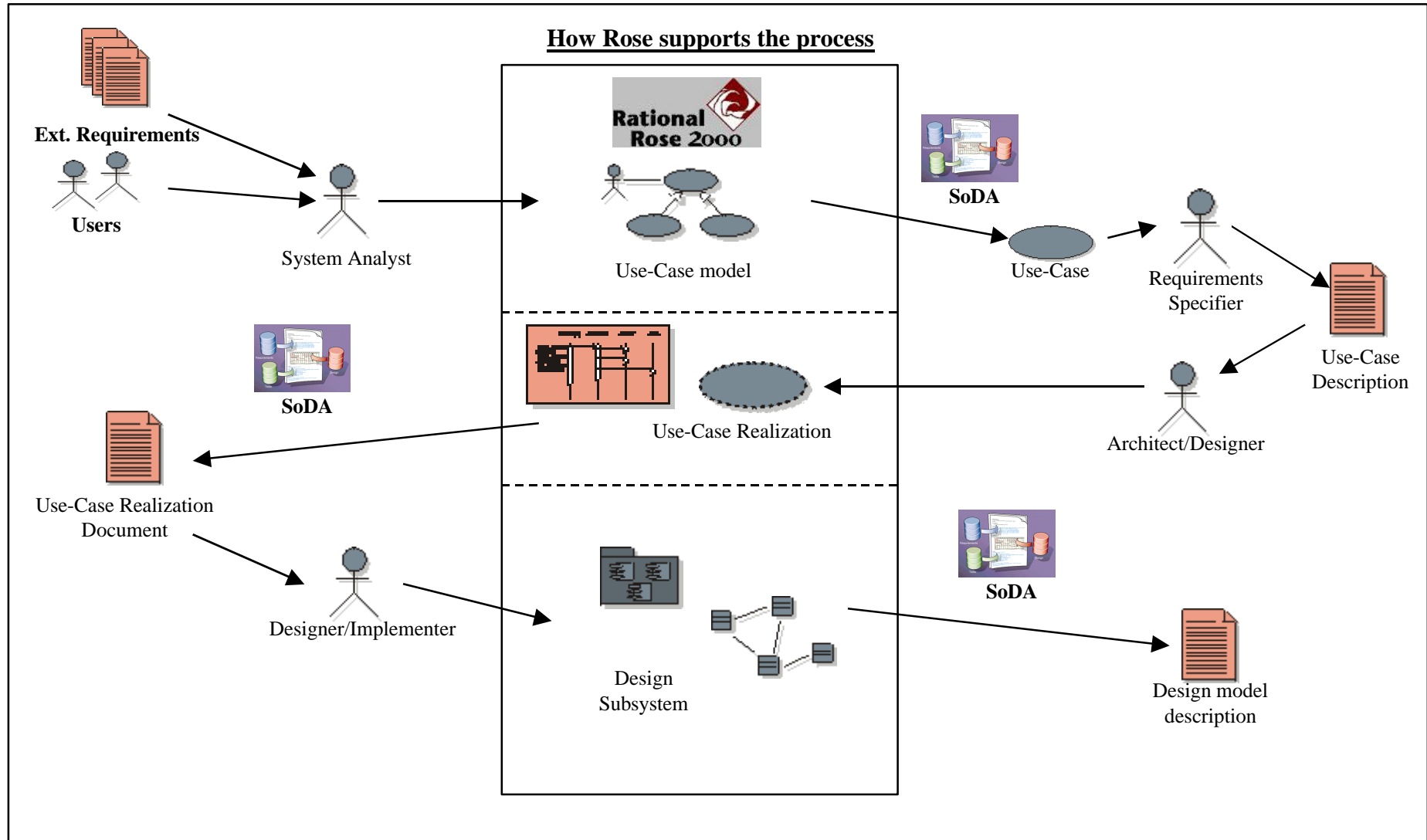


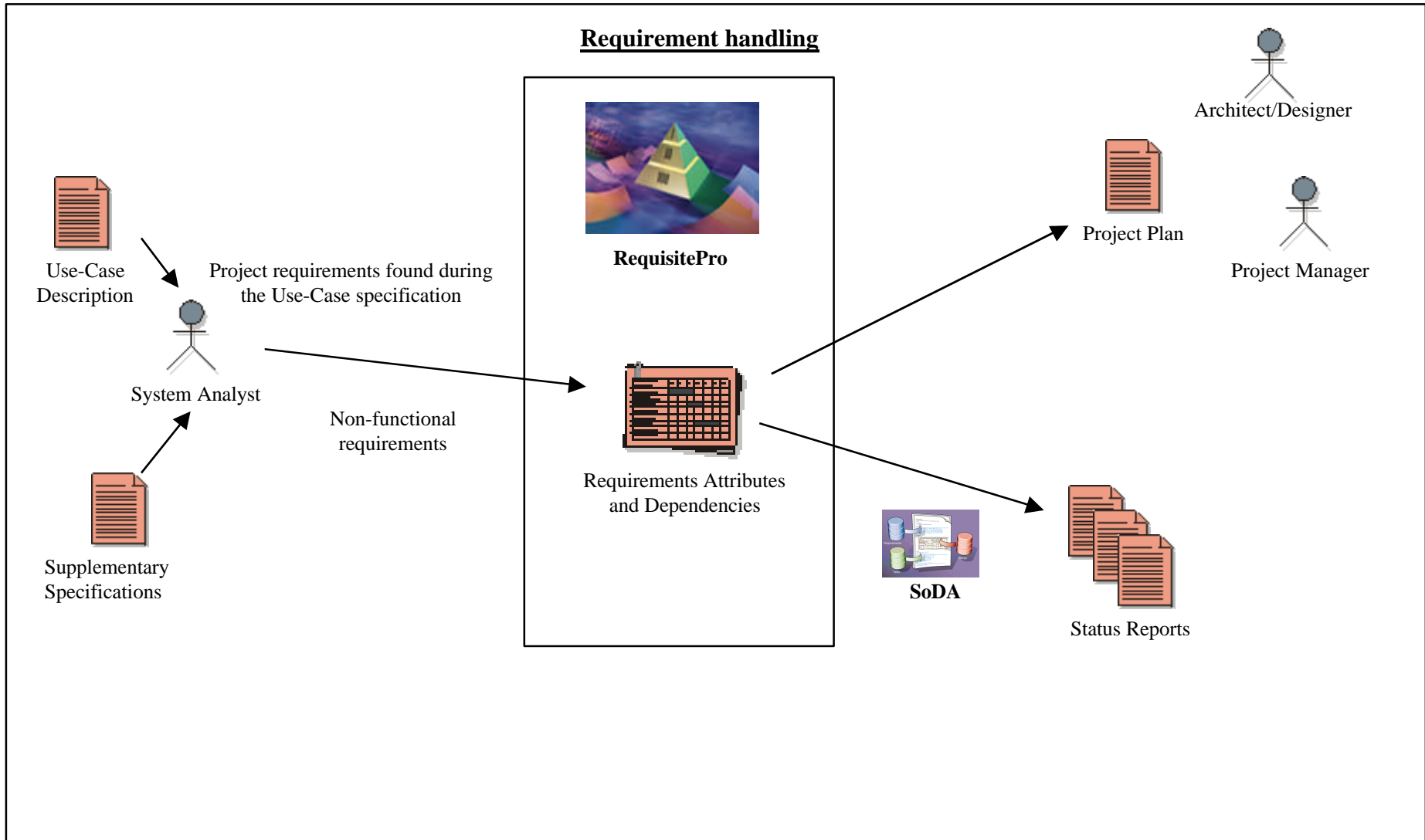
The V-model



**The sum of the UCRs that an SP is included in,
defines the SP's total responsibility.**







Reminders:

- Interfaces
- Architecture
- Manage Requirements!!!!